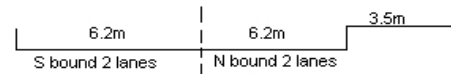
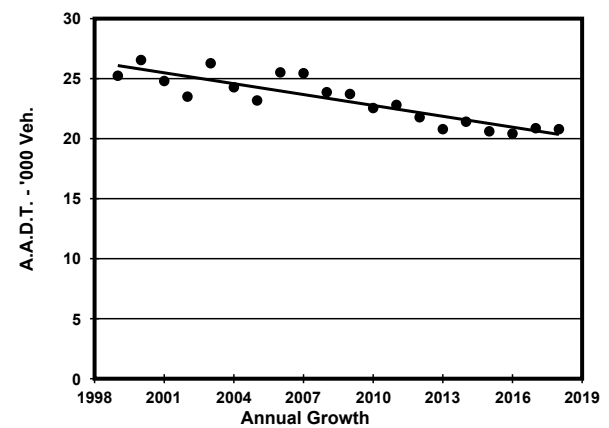
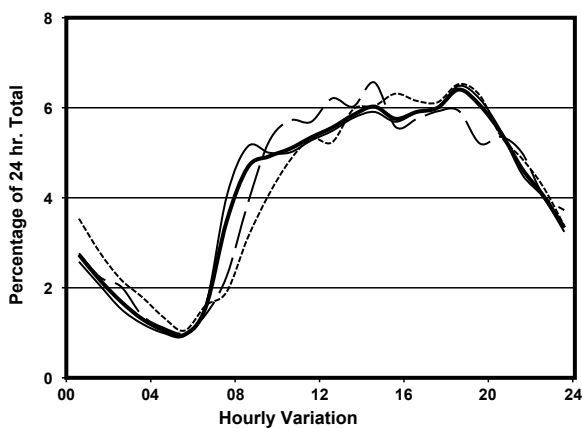
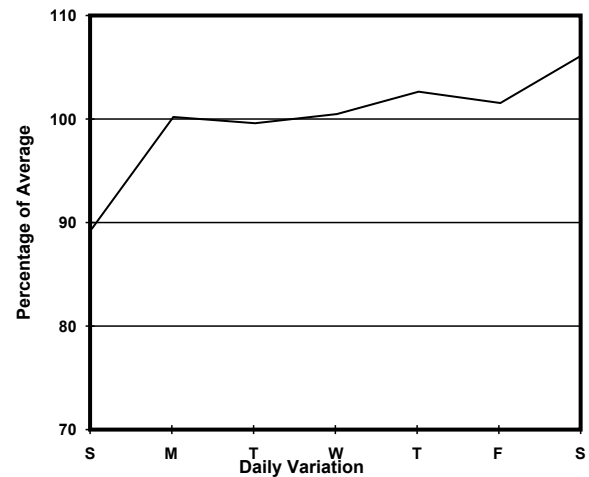
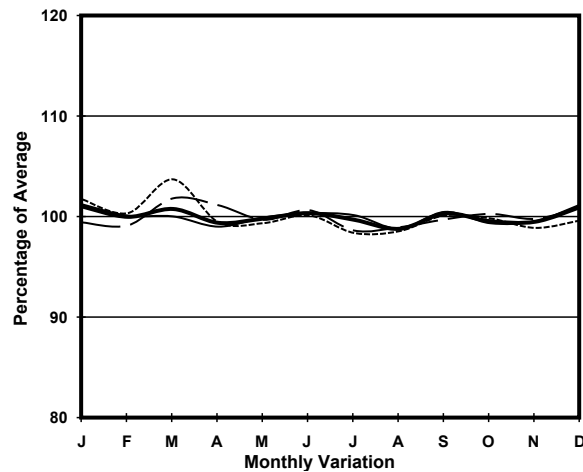


YEAR 2018  
 COVERAGE (B) STATION 4215  
 ROAD NETWORK MAJOR  
 ROAD TYPE DISTRICT DISTRIBUTOR

LINK YIM PO FONG ST (from SHANTUNG ST to WATERLOO RD)



## 1. TRAFFIC FLOW VARIATION AND GROWTH



— All day      - - - - - Mon.- Fri.      ..... Sat.      - . - . - Sun.

## 2. TRAFFIC CHARACTERISTICS (BY DIRECTION)

Parameter	All - Day	Mon. - Fri.	Sat.	Sun.
<b>SOUTH BOUND</b>				
A.A.D.T.	10480	10580	11440	9430
R 12 / 24 - %	65.9	66.2	67.7	62.3
R 16 / 24 - %	86	86.5	85.7	83.8
AM Peak Hour	0800-0900	0800-0900	0900-1000	0900-1000
One-way flow at AM peak hour	530	600	550	410
T - % (AM)	-	6	-	-
PM Peak Hour	1800-1900	1800-1900	1700-1800	1700-1800
One-way flow at PM peak hour	690	700	750	670
T - % (PM)	-	2.8	-	-
Prop.of commercial vehicles - 16 hr.	-	4	-	-
<b>NORTH BOUND</b>				
A.A.D.T.	10310	10510	10770	9260
R 12 / 24 - %	64.1	65.2	61.7	60.9
R 16 / 24 - %	84.4	85.3	82.9	80.8
AM Peak Hour	0900-1000	0900-1000	0900-1000	0900-1000
One-way flow at AM peak hour	490	500	610	360
T - % (AM)	-	5.2	-	-
PM Peak Hour	1800-1900	1800-1900	1800-1900	1800-1900
One-way flow at PM peak hour	640	670	590	600
T - % (PM)	-	3.3	-	-
Prop.of commercial vehicles - 16 hr.	-	3.8	-	-

## 3. OTHER INFORMATION AND COMMENT

**4. Vehicle classification and occupancy - Monday to Friday**

Time		Class of vehicle									
		Motor Cycle	Private Car	Taxi	Private LB	PLB	Goods veh.		Non Fr. Bus	Fr. Bus	
							Light	M & H		SD	DD
0700-0800	Pro	6.8	18.8	37.5	3.4	7.7	17.9	2.6	4.3	1.1	0.0
	Ocp	1.4	1.1	2.1	8.8	6.8	1.0	1.0	9.8	28.4	0.0
0800-0900	Pro	1.4	47.2	24.1	2.4	7.9	10.0	3.1	3.1	0.6	0.3
	Ocp	1.0	1.5	1.8	10.6	11.6	1.4	2.0	10.0	23.4	1.0
0900-1000	Pro	3.6	33.4	31.2	0.5	6.3	20.8	0.5	2.7	1.0	0.0
	Ocp	1.1	1.4	1.7	1.0	10.8	1.8	2.0	7.0	20.2	0.0
1000-1100	Pro	3.0	27.7	35.1	0.7	4.1	25.8	1.1	1.8	0.7	0.0
	Ocp	1.1	1.5	2.0	2.0	6.7	1.3	2.3	4.4	15.4	0.0
1100-1200	Pro	3.8	27.1	36.3	0.8	2.5	25.4	2.5	0.8	0.7	0.0
	Ocp	1.2	1.6	2.2	4.5	7.3	1.8	2.3	19.5	23.6	0.0
1200-1300	Pro	3.2	32.4	33.4	2.8	4.9	20.4	1.1	1.1	0.8	0.0
	Ocp	1.1	1.5	2.2	5.3	7.1	1.5	1.3	5.7	15.7	0.0
1300-1400	Pro	5.9	28.3	30.3	1.6	5.1	22.0	3.1	2.8	0.9	0.0
	Ocp	1.1	1.5	1.9	2.0	12.7	1.4	1.4	5.4	17.1	0.0
1400-1500	Pro	5.2	32.8	37.3	0.7	4.1	16.6	0.7	1.8	0.7	0.0
	Ocp	1.4	1.5	1.9	1.5	11.1	1.5	1.5	1.0	18.3	0.0
1500-1600	Pro	4.2	36.2	33.0	0.7	5.2	17.4	1.0	1.7	0.5	0.0
	Ocp	1.1	1.6	2.1	1.5	14.7	1.5	2.3	8.0	23.0	0.0
1600-1700	Pro	4.5	42.3	22.7	1.9	6.3	18.9	0.7	2.2	0.5	0.0
	Ocp	1.0	1.4	2.3	5.6	12.8	1.3	1.5	5.0	30.2	0.0
1700-1800	Pro	5.0	40.7	26.6	1.4	9.7	12.2	0.4	3.2	0.6	0.0
	Ocp	1.1	1.5	2.1	4.3	11.7	1.5	1.0	13.3	35.7	0.0
1800-1900 Peak hour	Pro	8.3	52.3	22.2	0.0	7.3	6.9	0.0	2.4	0.6	0.0
	Ocp	1.0	1.5	2.3	0.0	15.2	1.5	0.0	7.7	28.9	0.0
1900-2000	Pro	7.8	50.5	25.6	0.4	7.8	4.8	1.1	1.5	0.6	0.0
	Ocp	1.2	1.5	1.9	3.0	15.8	1.2	2.0	13.3	13.7	0.0
2000-2100	Pro	4.6	42.9	37.5	0.4	7.7	4.3	0.4	1.5	0.7	0.0
	Ocp	1.1	1.4	2.1	1.0	12.1	1.9	2.0	1.8	7.4	0.0
2100-2200	Pro	4.4	41.3	32.0	0.0	10.5	9.4	0.6	1.1	0.8	0.0
	Ocp	1.3	1.8	2.2	0.0	12.9	1.9	2.0	1.5	8.5	0.0
2200-2300	Pro	2.9	49.6	30.5	0.0	8.8	5.9	0.5	1.0	0.7	0.0
	Ocp	1.2	1.8	2.4	0.0	12.6	2.3	1.0	5.0	9.7	0.0
16 hours	Pro	4.6	38.4	30.6	1.1	6.5	14.9	1.2	2.0	0.7	0.1
	Ocp	1.1	1.5	2.1	5.3	12.0	1.5	1.8	7.6	19.7	1.0

**Legend**

**Pro.** Proportion of vehicles in % (Sum may not add up to 100% due to figure rounding)\*

**Ocp.** Average occupancy of vehicles including both driver and passengers\*

**M&H** Medium and Heavy

**\*** All traffic data are collected from combined bounds except for one way traffic